



Apartment 32 Eldon View, Regent Centre, Gosforth, NE3 3PW

£4,250

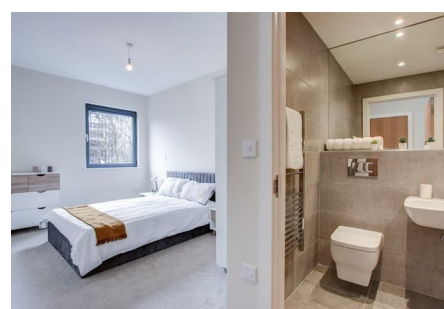
 2  2  1  D

Nestled in the desirable Regent Centre area of Gosforth, this charming house offers a delightful blend of comfort and convenience.

Upon entering, you will be greeted by a warm and inviting atmosphere, with ample natural light flowing through the well-proportioned rooms. The layout is thoughtfully designed, providing a seamless flow between living spaces, making it perfect for both relaxation and entertaining. The apartment boasts a cosy living area, ideal for unwinding after a long day, and a functional kitchen that invites culinary creativity.

The surrounding area of Gosforth is known for its excellent amenities, including shops, restaurants, and parks, all within easy reach. The Regent Centre itself is a hub of activity, offering convenient transport links and a variety of services, ensuring that everything you need is just a stone's throw away.

This property presents an excellent opportunity for those looking to establish themselves in a sought-after location. With its appealing features and prime position, it is sure to attract interest from a wide range of potential renters. Do not miss the chance to make this delightful apartment your new home in Gosforth.



The Grainger Suite Dobson House Newcastle, NE3 3PF

T. 0191 284 2213 | E.

www.maysgroup.co.uk